

By using this site you agree to the use of cookies for analytics, personalized content and ads.

[Learn More](#)

My School's WebStore

Find out if you can get more software through your school at no cost. Please enter your full school name to see if your school has a Microsoft Imagine subscription below. Example: "University of Washington" not "UW"

Noorderpoortcollege -Information
Communication Technology
Netherlands

Don't see your school?

Your school's WebStore requires a separate account created by your school administrator. For questions related to your school's WebStore or to request an account, go directly to that WebStore or click "Help" in the navigation bar for assistance.

[Search WebStore](#)[Studenten](#) | [Faculteitsmedewerkers/onderwyzend personeel](#)

De gewenste pagina kunt u alleen bekijken nadat u zich hebt aangemeld.

Aanmelden

Gebruikersnaam*

Wachtwoord*

[Aanmelden](#)

[Gebruikersnaam of wachtwoord vergeten?](#)

Registreren

Wilt u een account aanvragen of de registratie voltooien? Klik hieronder op de knop Registreren om door te gaan.

[Registreren](#)

"Windows 10"

Windows 10 Education, Version 1703 (Updated March 2017) ▲



Windows 10 Education is only available for education customers in volume licensing programs. Windows 10 Education includes features from Windows 10 Enterprise that are ideal for advanced security, and the comprehensive device control and management needs of today's educational institution. Windows 10 Education also enables simplified deployment in the education space; this edition provides a direct path for many devices to upgrade from Windows 10 Home or Windows 10 Pro.

Windows 10 Education, Version 1703 (Updated Mar 2017) is the latest version of Windows 10 Education. It includes all updates released for Windows 10 Education since Version 1607 (Updated Nov 2016), including security and non-security updates.

Kies een taal:

Engels



Windows 10 Education, Version 1703 (Updated March 2017) 32/64-bit (English) - Microsoft Imagine

Beschikbaar voor...

Gratis

[Toevoegen aan winkelwagen](#)

Windows 10 Education, Version 1703 (Updated March 2017) 32/64-bit (English-United Kingdom) - Microsoft Imagine

Beschikbaar voor...

Gratis

[Toevoegen aan winkelwagen](#)

Windows 10 Education N, Version 1703 (Updated March 2017) ▼

Windows 10 (Multiple Editions), Version 1703 (Updated March 2017) ▼

Windows 10 N (Multiple Editions), Version 1703 (Updated March 2017) ▼

"Windows 10"

Windows 10 Education, Version 1703 (Updated March 2017) ▼

Windows 10 Education N, Version 1703 (Updated March 2017) ▼

Windows 10 (Multiple Editions), Version 1703 (Updated March 2017) ▼

Windows 10 N (Multiple Editions), Version 1703 (Updated March 2017) ▲



Windows 10 Pro is designed for small and medium businesses, enabling organizations to manage their devices and apps, protect their business data, facilitate remote and mobile scenarios, as well as take advantage of the cloud technologies for their organizations. In addition to small and medium businesses, Windows 10 Pro devices would be a good choice for organizations supporting Choose Your Own Device (CYOD) programs.

Windows 10 Pro N includes the same functionality as Windows 10 Pro, except that it does not include certain media related technologies (Windows Media Player, Camera, Music, Movies and TV), and does not include the Skype app.

Windows 10 Pro N, Version 1703 (Updated Mar 2017) is the latest version of Windows 10 Pro N. It includes all updates released for Windows 10 Pro N since Version 1607 (Updated Nov 2016), including security and non-security updates.

Kies een taal:

Engels



Windows 10 N (Multiple Editions), Version 1703 (Updated Mar 2017) 32/64-bit (English-United Kingdom) - Microsoft Imagine

Beschikbaar voor...

Gratis

[Toevoegen aan winkelwagen](#)

Windows 10 N (Multiple Editions), Version 1703 (Updated March 2017) 32/64-bit (English) - Microsoft Imagine

Beschikbaar voor...

Gratis

[Toevoegen aan winkelwagen](#)

"Windows 10"

Windows 10 Education, Version 1703 (Updated March 2017) ▼

Windows 10 Education N, Version 1703 (Updated March 2017) ▲



Windows 10 Education is only available for education customers in volume licensing programs. Windows 10 Education includes features from Windows 10 Enterprise that are ideal for advanced security, and the comprehensive device control and management needs of today's educational institution. Windows 10 Education also enables simplified deployment in the education space; this edition provides a direct path for many devices to upgrade from Windows 10 Home or Windows 10 Pro.

Windows 10 Education N includes the same functionality as Windows 10 Education, except that it does not include certain media related technologies (Windows Media Player, Camera, Music, TV and Movies), and does not include the Skype app.

Windows 10 Education N, Version 1703 (Updated Mar 2017) is the latest version of Windows 10 Education N. It includes all updates released for Windows 10 Education N since Version 1607 (Updated Nov 2016), including security and non-security updates.

Kies een taal:

Engels

Windows 10 Education N, Version 1703 (Updated March 2017) 32/64-bit (English) - Microsoft Imagine

Beschikbaar voor...

Gratis

Toevoegen aan winkelwagen

Windows 10 Education N, Version 1703 (Updated March 2017) 32/64-bit (English-United Kingdom) - Microsoft Imagine

Beschikbaar voor...

Gratis

Toevoegen aan winkelwagen

Noorderpoort

Technologie & ICT

[Home](#) | [Help](#) | [Nederlands](#)

Hallo, hw.hilgersom@noorderpoort.nl |



Product zoeken



[Studenten](#)

[Faculteitsmedewerkers/onderwijzend personeel](#)

Details (Bestelnummer: 100415031071)

Downloads



Windows 10 Education 32/64-bit (English) - Microsoft Imagine - Downloaden

Productsleutel: [REDACTED]

• [Burning the ISO/IMG file onto a disc](#)

Downloaden

Taal selecteren:

Nederlands (Nederland)



Bestellingoverzicht

Bestelnummer: 100415031071

Besteldatum: 2015-09-27

Uw software downloaden

[Hebt u hulp nodig?](#)



Windows 10 Education 32/64-bit (English)

Microsoft Imagine - Windows 10 Education 64-bit (English)

[Downloaden](#)

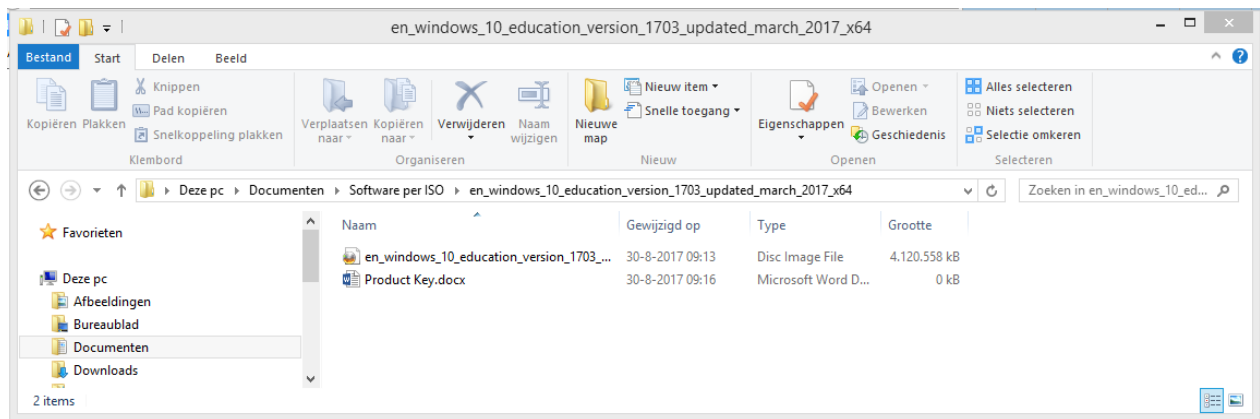
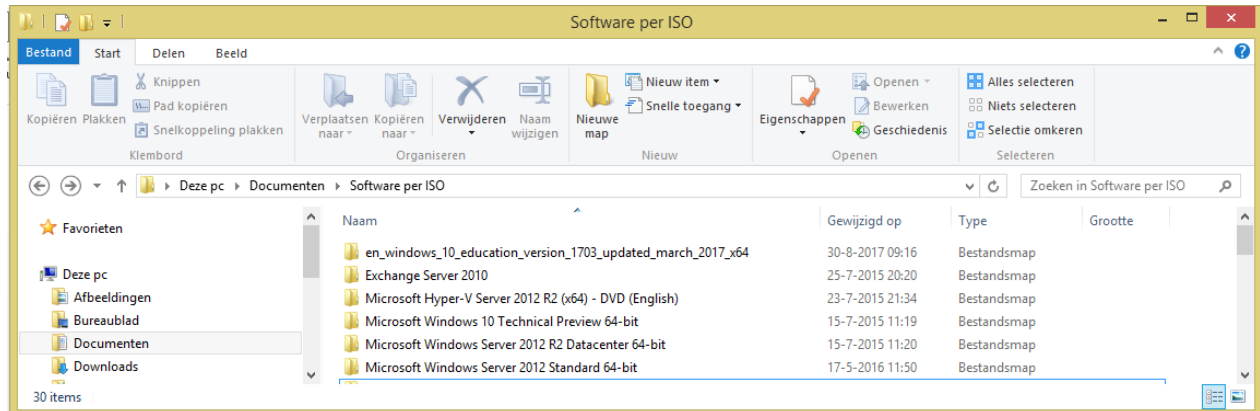
Grootte: 3 GB

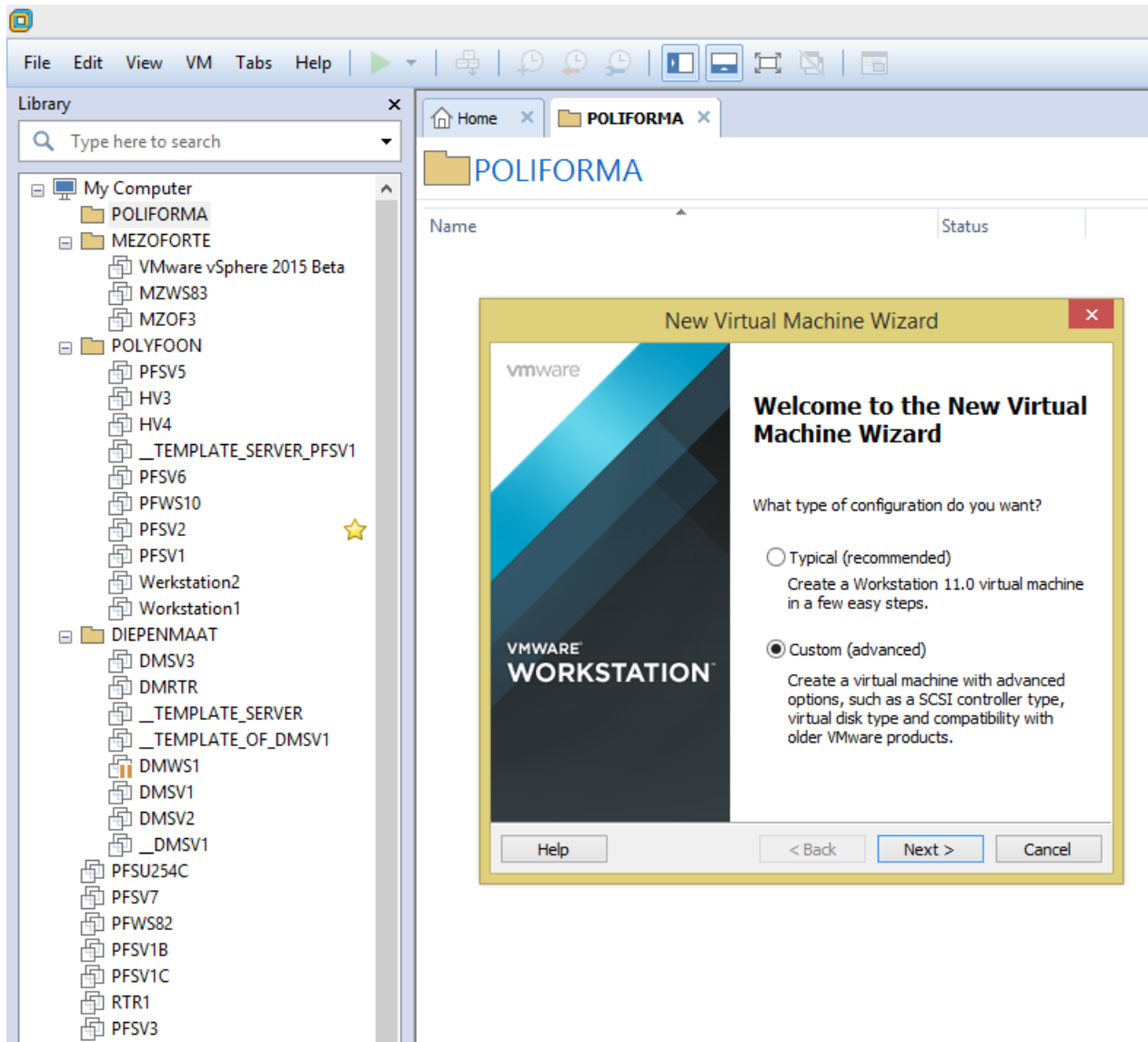
Microsoft Imagine - Windows 10 Education 32-bit (English)

[Downloaden](#)

Grootte: 2 GB

Maak een aparte folder voor ISO's en product keys aan.





New Virtual Machine Wizard

Choose the Virtual Machine Hardware Compatibility

Which hardware features are needed for this virtual machine?

Virtual machine hardware compatibility

Hardware compatibility: Workstation 11.0

Compatible with: ESX Server

Compatible products:

- Fusion 7.0
- Workstation 11.0

Limitations:

- 64 GB memory
- 16 processors
- 10 network adapters
- 8 TB disk size

Help < Back Next > Cancel

New Virtual Machine Wizard

Guest Operating System Installation

A virtual machine is like a physical computer; it needs an operating system. How will you install the guest operating system?

Install from:

Installer disc:

No drives available

Installer disc image file (iso):

D:\Users\hw.hilgersom\Downloads\debian-9.0.0-amd64.iso Browse...

I will install the operating system later.

The virtual machine will be created with a blank hard disk.

Help < Back Next > Cancel

New Virtual Machine Wizard

Select a Guest Operating System
Which operating system will be installed on this virtual machine?

Guest operating system

- Microsoft Windows
- Linux
- Novell NetWare
- Solaris
- VMware ESX
- Other

Version

Windows 10 x64

Help < Back Next > Cancel

New Virtual Machine Wizard

Name the Virtual Machine
What name would you like to use for this virtual machine?

Virtual machine name:

PFWS1

Location:

D:\Users\hw.hilgersom\Documents\Virtual Machines\PFWS1

Browse...

The default location can be changed at Edit > Preferences.

< Back Next > Cancel

New Virtual Machine Wizard

Firmware Type
What kind of boot device should this virtual machine have?

Firmware type

BIOS
 EFI

< Back Next > Cancel

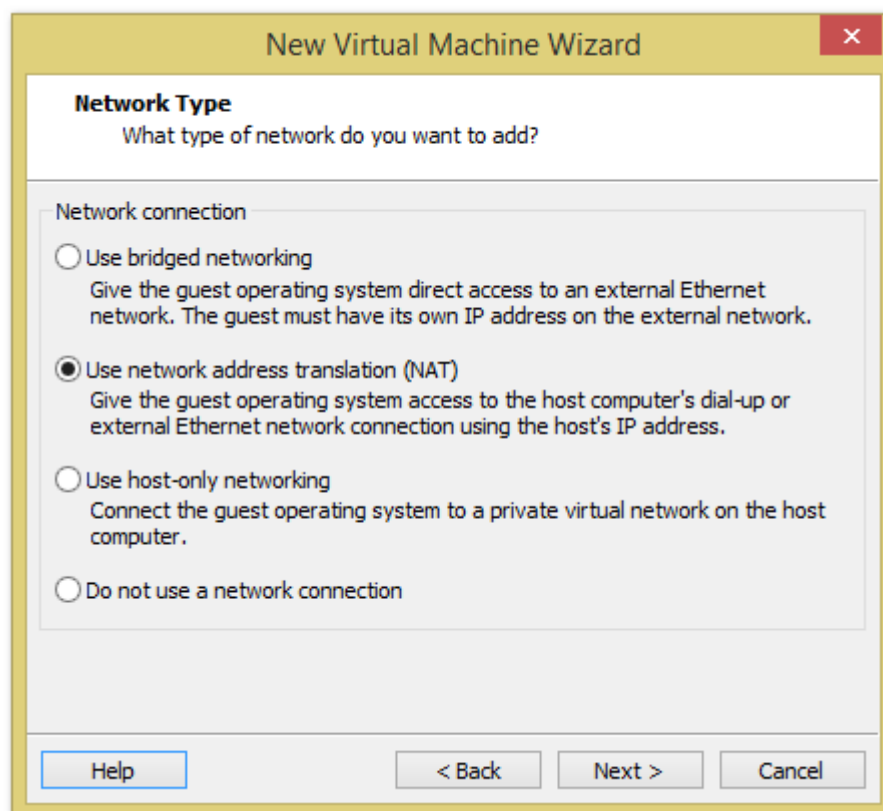
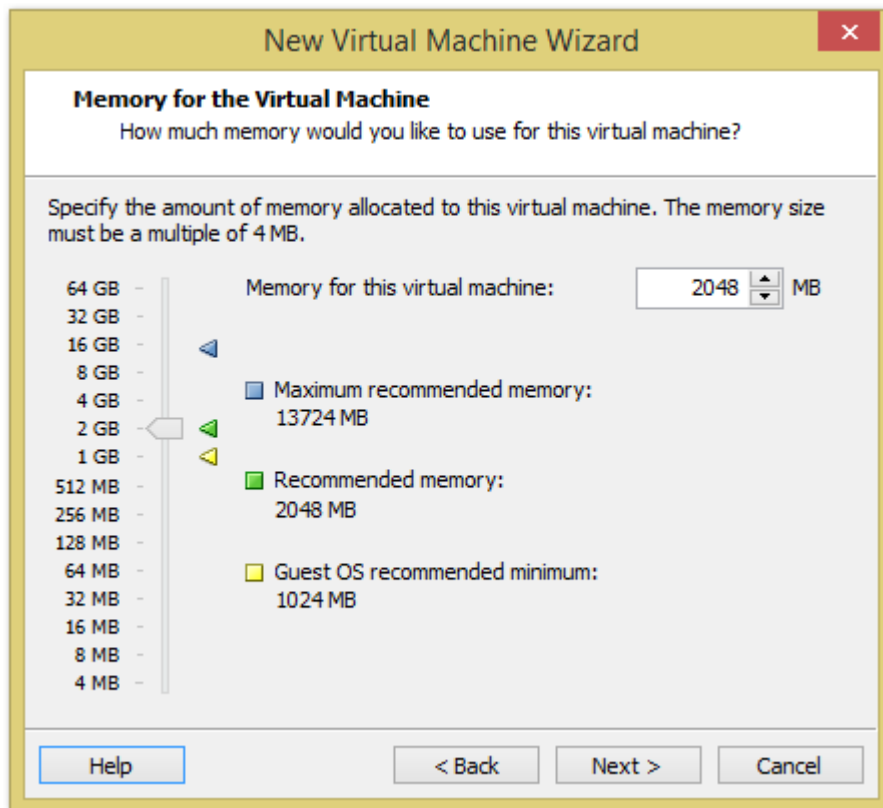
New Virtual Machine Wizard

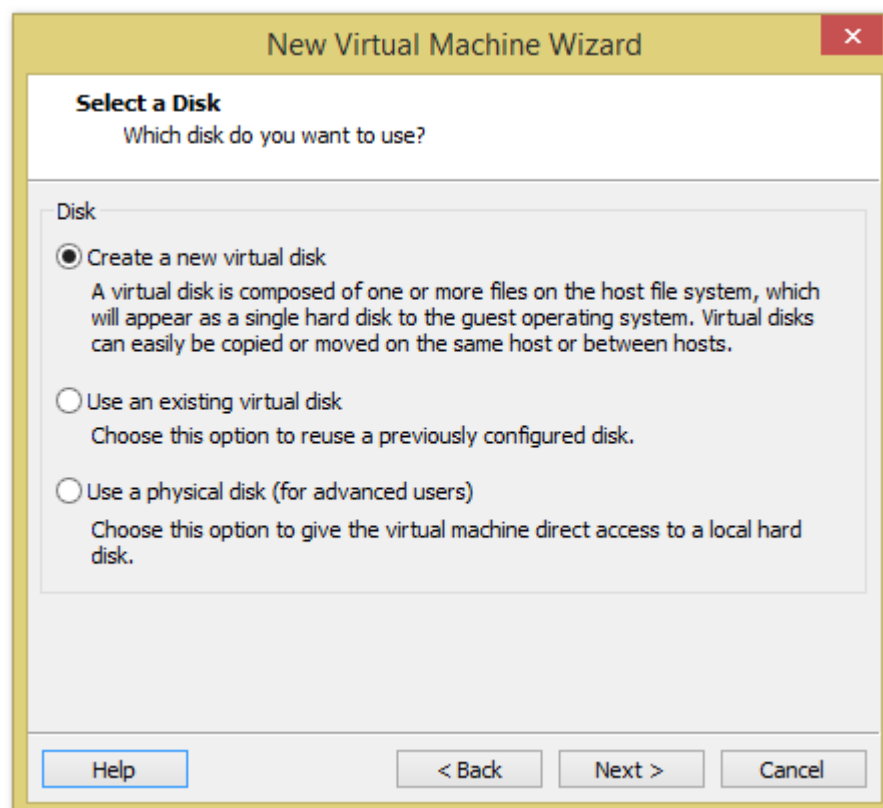
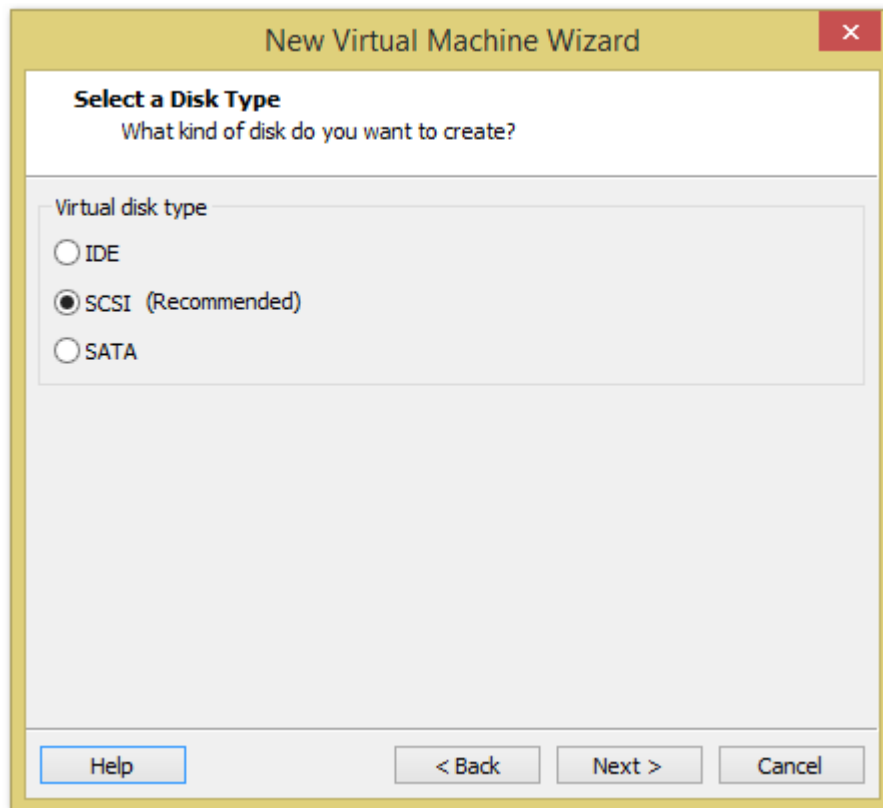
Processor Configuration
Specify the number of processors for this virtual machine.

Processors

Number of processors:	1
Number of cores per processor:	1
Total processor cores:	1

Help < Back Next > Cancel





New Virtual Machine Wizard

Specify Disk Capacity

How large do you want this disk to be?

Maximum disk size (GB): 0

Recommended size for Windows 10 x64: 60 GB

Allocate all disk space now.

Allocating the full capacity can enhance performance but requires all of the physical disk space to be available right now. If you do not allocate all the space now, the virtual disk starts small and grows as you add data to it.

Store virtual disk as a single file

Split virtual disk into multiple files

Splitting the disk makes it easier to move the virtual machine to another computer but may reduce performance with very large disks.

Help < Back Next > Cancel

New Virtual Machine Wizard

Specify Disk File

Where would you like to store the disk file?

Disk File

One disk file will be created for each 2 GB of virtual disk capacity. File names for each file beyond the first will be automatically generated using the file name provided here as a basis.

Browse...

Help < Back Next > Cancel

New Virtual Machine Wizard



Ready to Create Virtual Machine

Click Finish to create the virtual machine. Then you can install Windows 10 x64.

The virtual machine will be created with the following settings:

Name:	PFWS1	▲
Location:	D:\Users\hw.hilgersom\Documents\Virtual Machines\...	
Version:	Workstation 11.0	
Operating System:	Windows 10 x64	
Hard Disk:	240 GB, Split	
Memory:	2048 MB	
Network Adapter:	NAT	
Other Devices:	CD/DVD, USB Controller, Printer, Sound Card	▼

Customize Hardware...

< Back

Finish

Cancel

Home x POLIFORMA x PFWS1 x

PFWS1

Power on this virtual machine
Edit virtual machine settings

▼ Devices

- Memory 2 GB
- Processors 1
- Hard Disk (SCSI) 240 GB
- CD/DVD (SATA) Auto detect
- Network Adapter NAT
- USB Controller Present
- Sound Card Auto detect
- Printer Present
- Display Auto detect

▼ Description

Type here to enter a description of this virtual machine.

Virtual Machine Settings

Hardware | Options

Device	Summary
Memory	2 GB
Processors	1
Hard Disk (SCSI)	240 GB
CD/DVD (SATA)	Auto detect
Network Adapter	NAT
USB Controller	Present
Sound Card	Auto detect
Printer	Present
Display	Auto detect

Device status

Connected
 Connect at power on

Connection

Use physical drive:
Auto detect

Use ISO image file:
Browse...

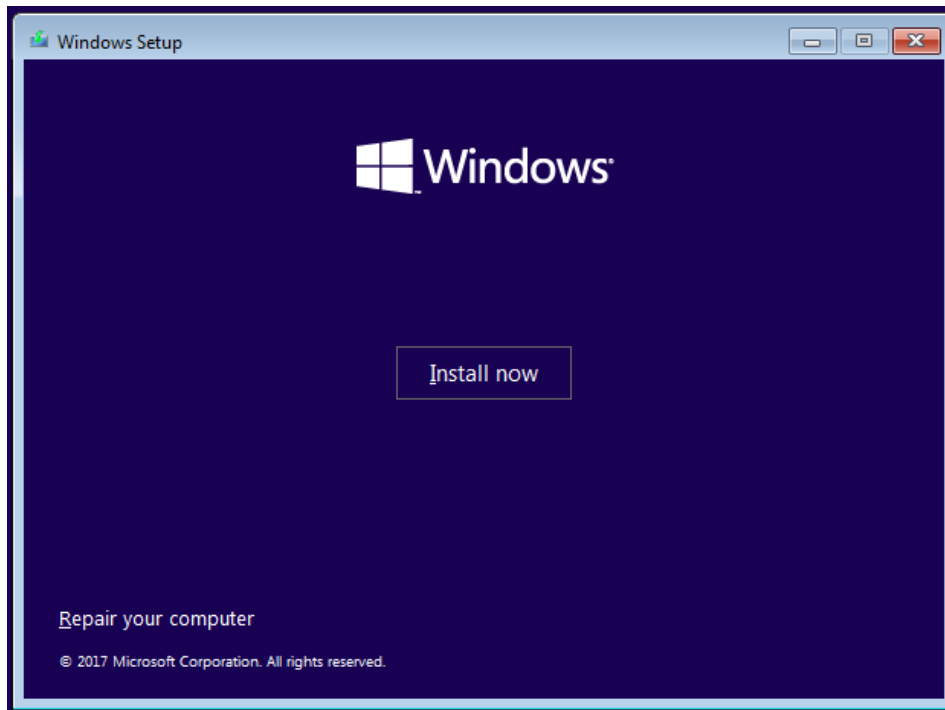
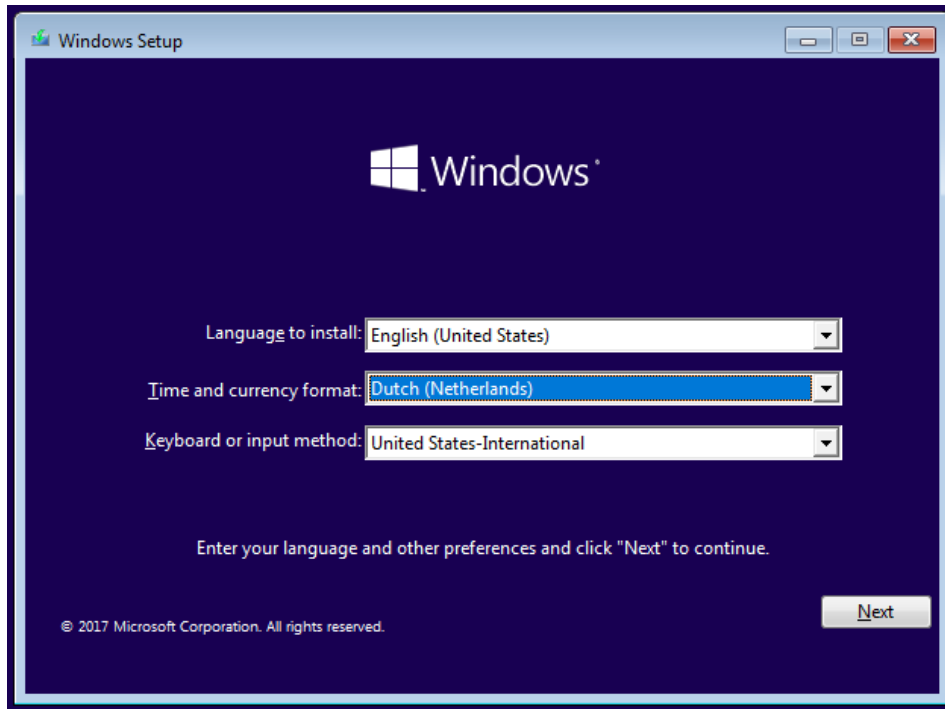
Advanced...

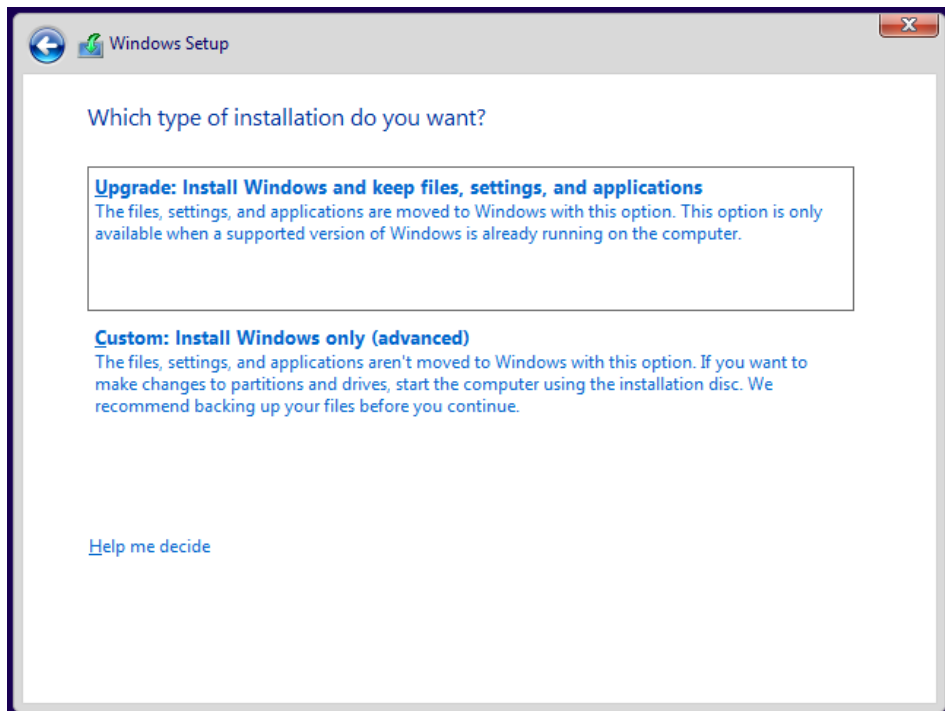
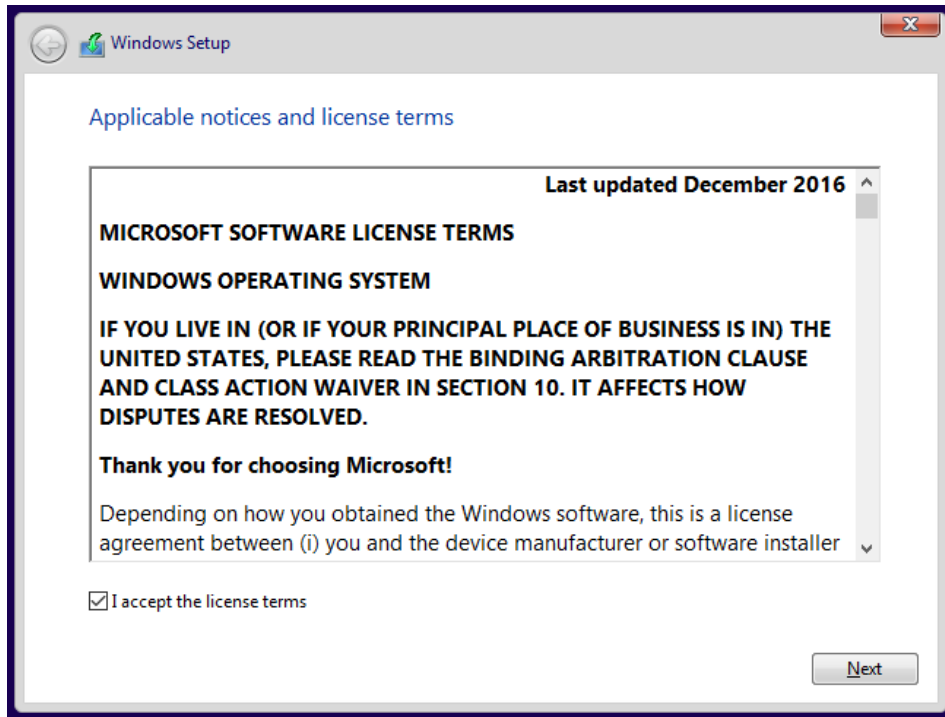
Add... Remove

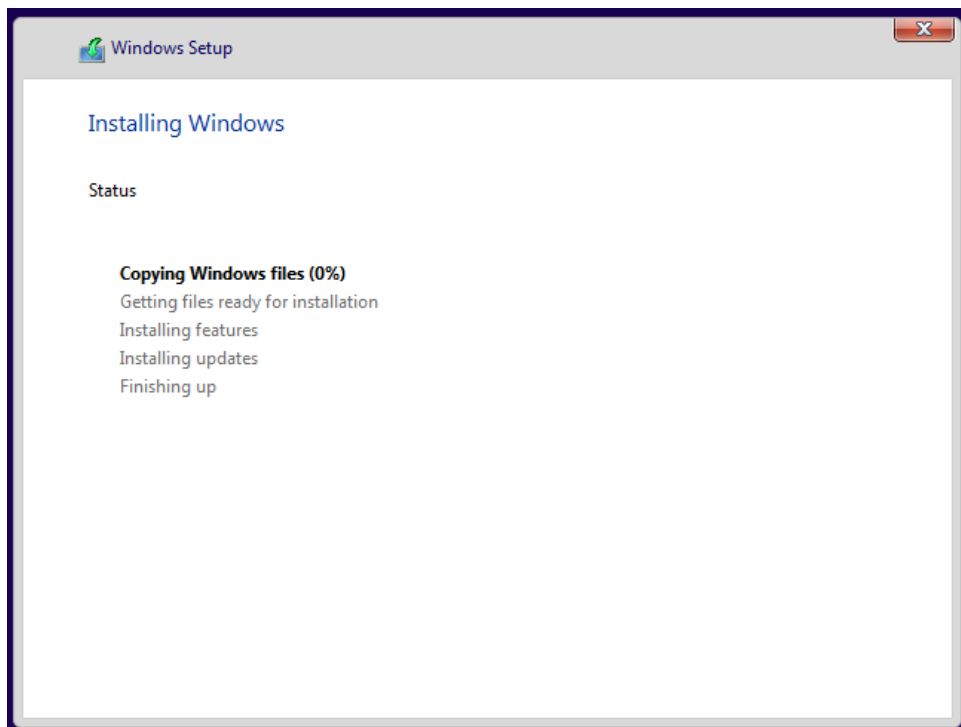
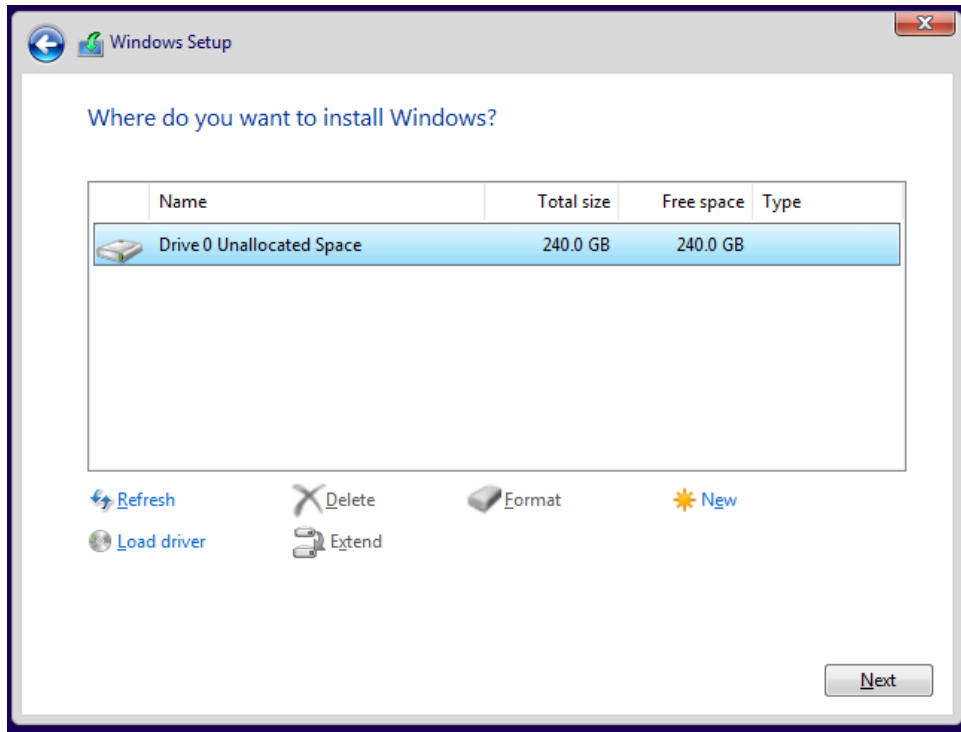
OK Cancel Help

▼ Virtual Machine Details

State: Powered off
Configuration file: D:\Users\hw.hilgersom\Documents\Virtual Machines\PFWS1\PFWS1.vmx
Hardware compatibility: Workstation 11.0 virtual machine







Let's start with region. Is this right?

Morocco

Mozambique

Myanmar

Namibia

Nauru

Nepal

Netherlands

Yes

Is this the right keyboard layout?

United States-Dvorak for left hand

United States-Dvorak for right hand

United States-International

US

US English Table for IBM Arabic 238_L

Vietnamese

Wolof

Yes

Want to add a second keyboard layout?



Add layout

Skip

 Sign in with Microsoft

Work or school account



someone@example.com

Which account should I use?

Sign in with the username and password you use with Office 365 or other business services from Microsoft.

[Domain join instead](#)

[Privacy & Cookies](#)

[Terms of use](#)

Next

Choose privacy settings for your device

Microsoft puts you in control of your privacy. Choose your settings, then select 'Accept' to save them. You can change these settings at any time.

Location

Get location-based experiences like local weather and directions to your favorite places. Let Windows & apps request your location, and send Microsoft location data to help improve location services.

On

Diagnostics

Help us fix things and improve Microsoft products and services. Send diagnostic data (including browser, app & feature usage, and inking & typing data) to Microsoft.

Full

Relevant Ads

Let apps use advertising ID to make ads more interesting to you based on your app usage.

On

Speech recognition

Talk to Cortana and Store apps that support voice recognition. Send Microsoft your voice input to help improve speech services.

On

Tailored experiences with diagnostic data

Get more relevant tips and recommendations to tailor Microsoft products and services for your needs. Let Microsoft use your diagnostic data to make this work.

On

Select 'Learn more' for info on the above settings, how Windows Defender SmartScreen works, and the related data transfers and uses.

[Learn more](#)

[Accept](#)



Alright, you're connected. Now, we'll check for any updates...



Sign in with Microsoft

Work or school account



someone@example.com

Which account should I use?

Sign in with the username and password you use with Office 365 or other business services from Microsoft.

[Domain join instead](#)

[Privacy & Cookies](#)

[Terms of use](#)

Next

Who's going to use this PC?

What name do you want to use?



PCGebruiker1



Or, even better, use an online account

Next

Create a super memorable password

There's no way to retrieve a lost password for this kind of account, so make sure to pick something you'll be absolutely sure to remember.



Or, even better, use an online account

Next

Add a hint for your password

Just in case you forget. Again, make it as unforgettable as you can.



Or, even better, use an online account

Next

Choose privacy settings for your device

Microsoft puts you in control of your privacy. Choose your settings, then select 'Accept' to save them. You can change these settings at any time.

Location

Get location-based experiences like local weather and directions to your favorite places. Let Windows & apps request your location, and send Microsoft location data to help improve location services.

On

Diagnostics

Help us fix things and improve Microsoft products and services. Send diagnostic data (including browser, app & feature usage, and inking & typing data) to Microsoft.

Full

Relevant Ads

Let apps use advertising ID to make ads more interesting to you based on your app usage.

On

Speech recognition

Talk to Cortana and Store apps that support voice recognition. Send Microsoft your voice input to help improve speech services.

On

Tailored experiences with diagnostic data

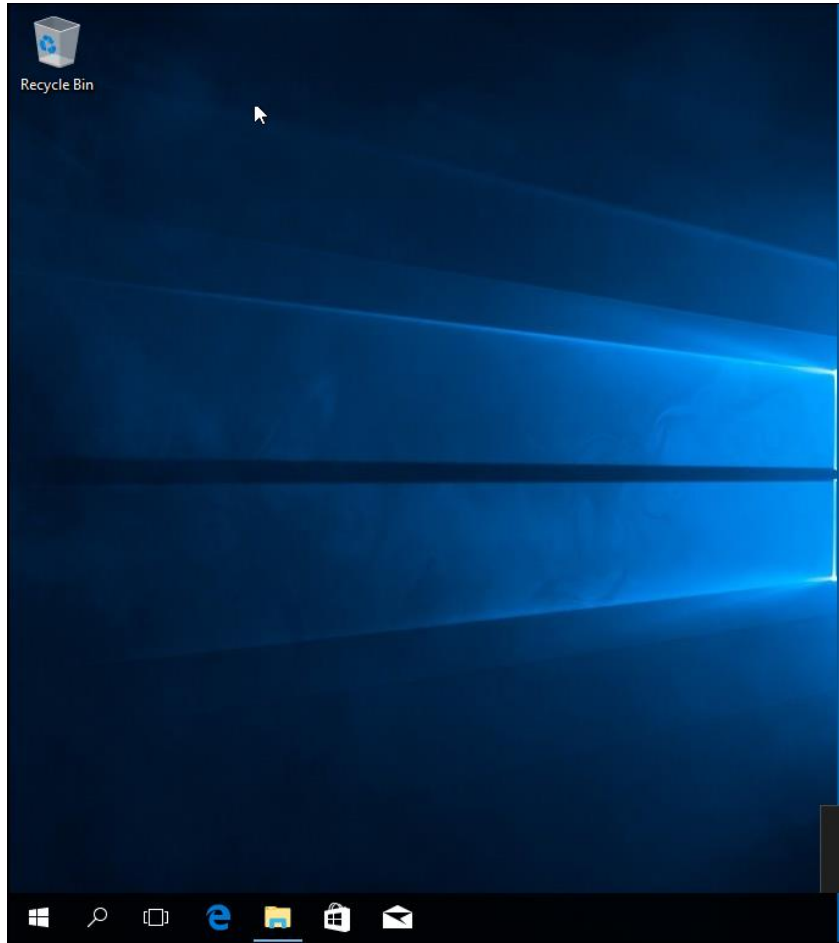
Get more relevant tips and recommendations to tailor Microsoft products and services for your needs. Let Microsoft use your diagnostic data to make this work.

On

Select 'Learn more' for info on the above settings, how Windows Defender SmartScreen works, and the related data transfers and uses.

[Learn more](#)


[Accept](#)



Recycle Bin

Windows taskbar icons: Start, Search, Task View, Edge, File Explorer, Home, Mail.

Networks

 Network

Do you want to allow your PC to be discoverable by other PCs and devices on this network?

We recommend allowing this on your home and work networks, but not public ones.

Searching for Display Driver
Screen resolution, performance and battery life may be reduced until a

Home

Find a setting

Personalization

Background

Colors

Lock screen

Themes

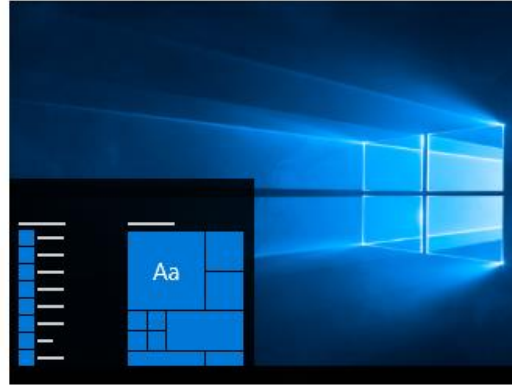
Start

Taskbar

Background

You need to activate Windows before you can personalize your PC.

[Activate Windows now.](#)



Background

Picture

Choose your picture

⚙️ Home

Find a setting 🔍

Update & security

🔄 Windows Update

🛡️ Windows Defender

↑ Backup

🔧 Troubleshoot

🕒 Recovery

📌 **Activation**

👤 Find My Device

🔧 For developers

👤 Windows Insider Program

Activation

Windows

Edition Windows 10 Education

Activation Windows is not activated

We can't activate Windows on this device because you don't have a valid digital license or product key. If you think you do have a valid license or key, select **Troubleshoot** below. Error code: **0x803F7001**

[Learn more](#)

Activate Windows now

Running a non-genuine copy of Windows can put you at greater risk for viruses and other security threats.

To get genuine Windows, enter a different product key. If you don't have one, contact your system administrator.

🔑 [Change product key](#)

If you're having problems with activation, select **Troubleshoot** to try and fix the problem.

🔧 [Troubleshoot](#)

Unable to activate Windows

Unable to activate Windows

Windows can't activate with this product key. Go to Settings for more information.
(0xc004b100)

[Learn More](#)

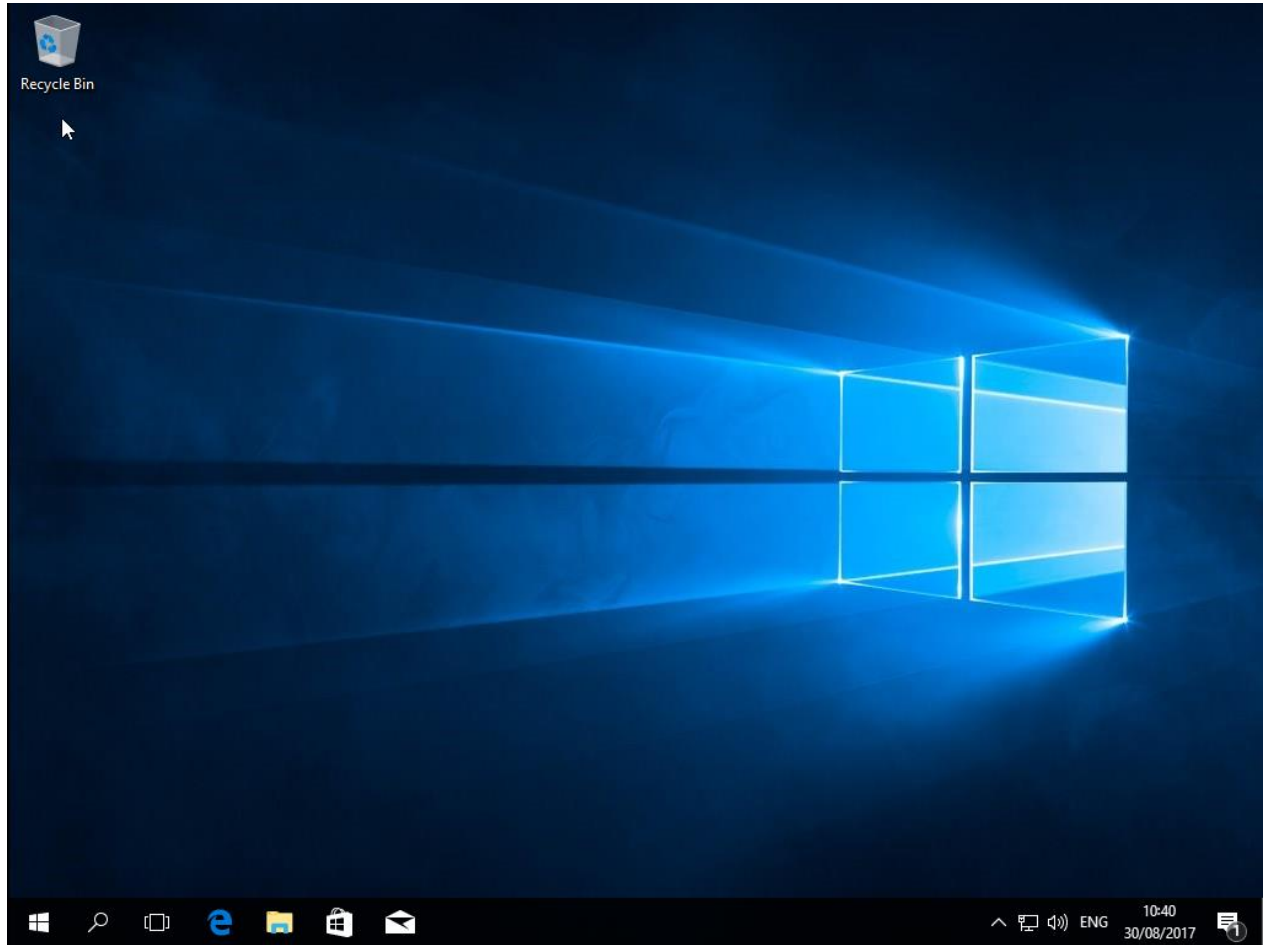
Close

Windows is activated

Windows is activated

We've activated this copy of Windows.

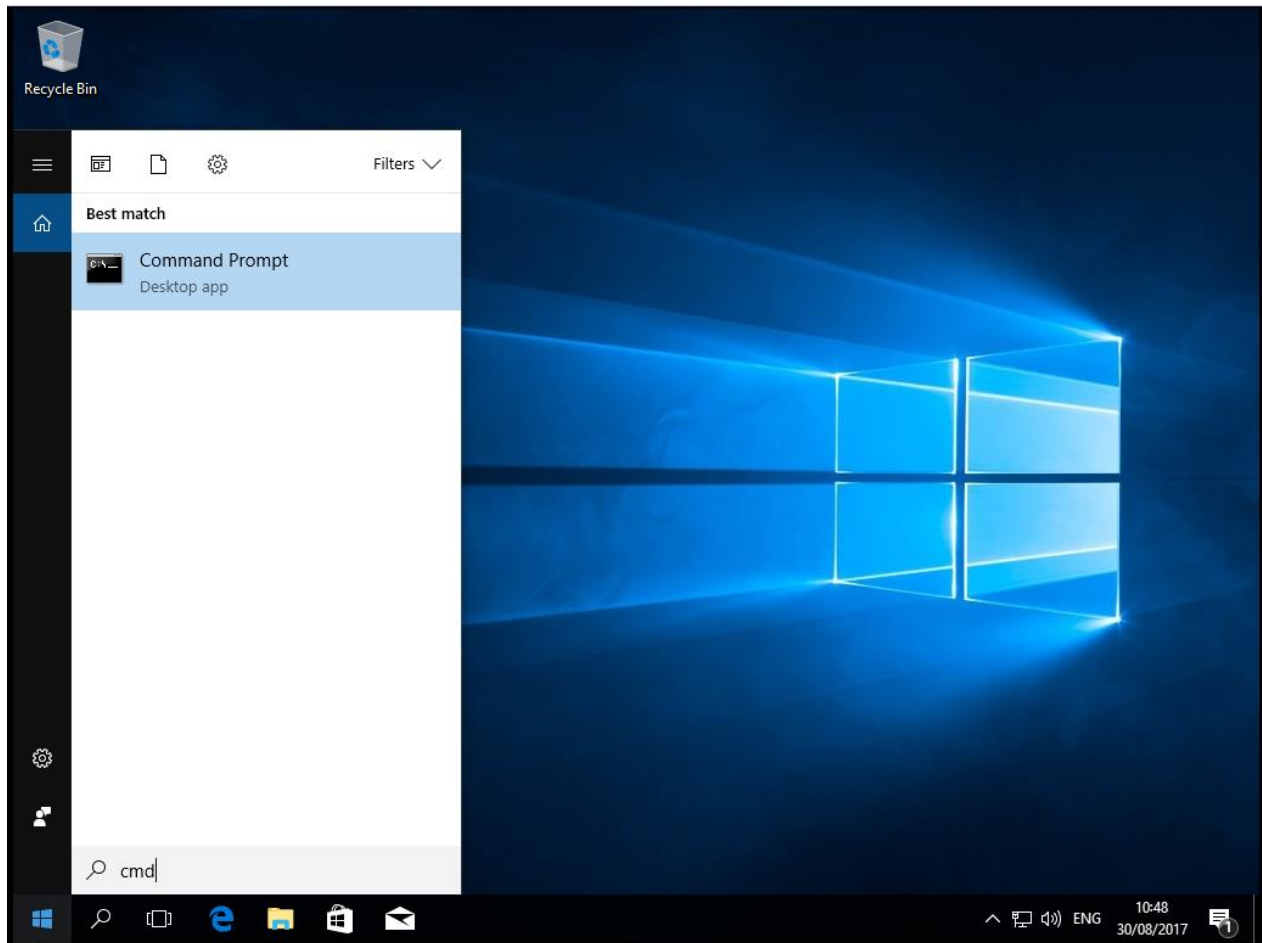
Close



The image shows a Windows 10 desktop environment. In the top-left corner, there is a Recycle Bin icon. A File Explorer window titled 'This PC' is open, displaying the 'System' folder. The address bar shows the path: Control Panel > System and Security > System. The main content area of the System window is titled 'View basic information about your computer' and displays the following details:

- Windows edition:** Windows 10 Education
© 2017 Microsoft Corporation. All rights reserved.
- System:**
 - Processor: Intel(R) Core(TM) i7-4710HQ CPU @ 2.50GHz 2.49 GHz
 - Installed memory (RAM): 2,00 GB
 - System type: 64-bit Operating System, x64-based processor
 - Pen and Touch: No Pen or Touch Input is available for this Display
- Computer name, domain, and workgroup settings:**
 - Computer name: DESKTOP-BGOFVNG [Change settings](#)
 - Full computer name: DESKTOP-BGOFVNG
 - Computer description:
 - Workgroup: WORKGROUP
- Windows activation:**
 - Windows is activated [Read the Microsoft Software License Terms](#)
 - Product ID: 00328-00074-81642-AA914 [Change product key](#)

At the bottom of the System window, there is a 'See also' section with a link to 'Security and Maintenance'. The taskbar at the bottom shows the Start button, search icon, and several pinned application icons. The system tray in the bottom-right corner displays the time as 10:47, the date as 30/08/2017, and the language as ENG.



```
Command Prompt
Microsoft Windows [Version 10.0.15063]
(c) 2017 Microsoft Corporation. All rights reserved.

C:\Users\hw.hilgersom>ipconfig /all

Windows IP Configuration

    Host Name . . . . . : DESKTOP-BGOFVNG
    Primary Dns Suffix . . . . . :
    Node Type . . . . . : Hybrid
    IP Routing Enabled. . . . . : No
    WINS Proxy Enabled. . . . . : No
    DNS Suffix Search List. . . . . : localdomain

Ethernet adapter Ethernet0:

    Connection-specific DNS Suffix . . : localdomain
    Description . . . . . : Intel(R) 82574L Gigabit Network Connection
    Physical Address. . . . . : 00-0C-29-4E-13-7A
    DHCP Enabled. . . . . : Yes
    Autoconfiguration Enabled . . . . . : Yes
    Link-local IPv6 Address . . . . . : fe80::748f:1d89:2e1e:da1b%2(Preferred)
    IPv4 Address. . . . . : 192.168.20.131(Preferred)
    Subnet Mask . . . . . : 255.255.255.0
    Lease Obtained. . . . . : Wednesday, 30 August 2017 10:13:24
    Lease Expires . . . . . : Wednesday, 30 August 2017 11:15:01
    Default Gateway . . . . . : 192.168.20.2
    DHCP Server . . . . . : 192.168.20.254
    DHCPv6 IAID . . . . . : 33557545
    DHCPv6 Client DUID. . . . . : 00-01-00-01-21-38-2A-24-00-0C-29-4E-13-7A
    DNS Servers . . . . . : 192.168.20.2
    Primary WINS Server . . . . . : 192.168.20.2
    NetBIOS over Tcpip. . . . . : Enabled
```